

City Report of Chennai

Kandasamy Manivasan

Joint Commissioner (Health) & Project Director
Health & District Family Welfare Bureau
Chennai Corporation AIDS Prevention and Control Society
Corporation of Chennai, India

A. City Outline

The Chennai City is the capital of State of Tamil Nadu in India has emerged as a cosmopolitan city, situated in the northeast of Tamil Nadu, on the coast of Bay of Bengal. The Chennai city is on flat land with two rivers running through it. Beginning as a settlement of the East India Company, Chennai is now India's fourth largest city. The climate is hot and humid. It lies between 12° 9' and 13° 9' of the northern latitude and 80° 12' and 80° 19' of the southern latitude extending from Thiruvanmiyur in the south to Thiruvottriyur in the north. The city boundary is extended to about 174 sq. kms and the existing population is estimated to be around 4.85 millions. Further increase in geographical area and addition of population is inevitable. The Port of Chennai has more than 100 years of tradition, strategically located and well connected with major parts of the world and it is the hub port on the Indian subcontinent.

B. Government Structure

1. Local Government System

The Constitution (Seventy third Amendment) Act, 1992 ensures

- a three tier system of Local Self Administration in Rural Areas for all states having population over 2 millions.
- holding of elections regularly every 5 years
- to appoint State Finance Commission to make recommendations as regards the financial powers of the Panchayats.
- to constitute District Planning Committee to prepare draft development plan for the district as a whole.

The powers delegated under this act are

- (a) Preparation of plan for economic development and social justice.
- (b) Implementation of schemes for economic development and social justice in relation to 29 subjects given in Eleventh Schedule of the Constitution.
- (c) To levy, collect and appropriate taxes, duties, tolls and fees.

The Constitution (Seventy Fourth Amendment) Act 1992, defined the roles of Government and Urban Local Bodies with respect to taxation powers, revenue sharing and ensure regular conduct of elections.

Corporation of Chennai

On 29th September 1688, the Corporation was inaugurated with powers to decide petty cases, levy rates upon the inhabitants for building of schools, a Town Hall and a jail. The Parliamentary Act of 1792 gave the power to levy municipal taxes, in the city and various acts introduced many changes in the constitution and powers of the Corporation, provided various statutory committees and gradually increased the number of divisions to 155. In 1974 under the Town and Country Planning Act the task of planning for the city and greater metropolitan area has been taken over by Chennai Metropolitan Development Authority.

For efficient functioning, the Chennai Municipal Corporation consists of a Council, a Mayor, Standing Committees, Ward Committees and a Commissioner. The role of Mayor and the Council is briefly described below.

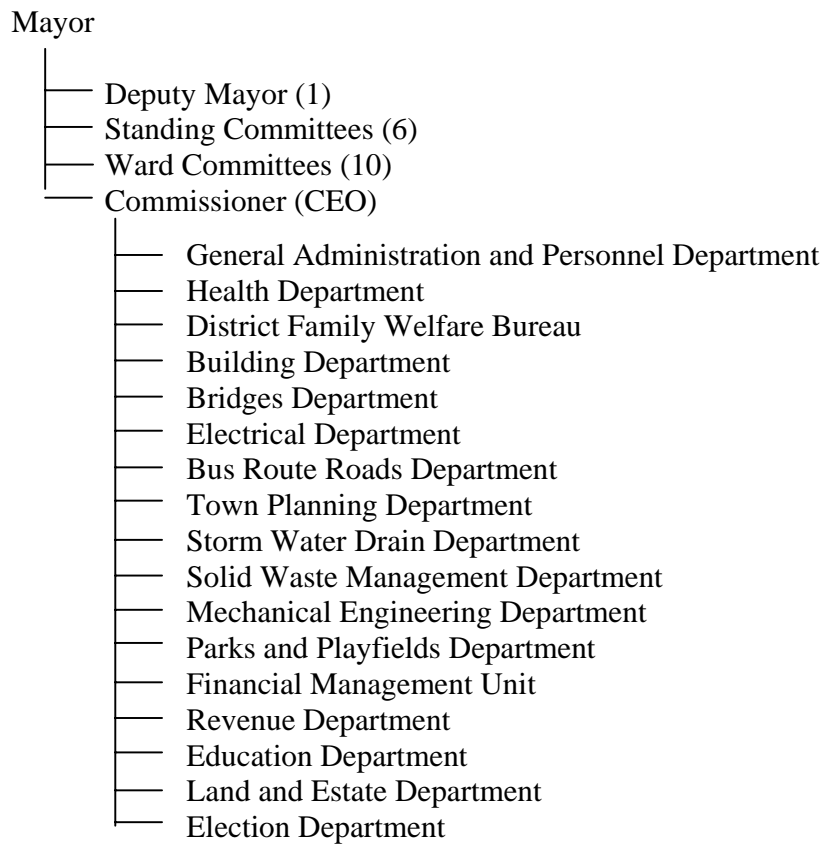
2. The Role of the Mayor

The Mayor is directly elected to serve five-year terms and is not permitted to simultaneously serve as a Member of the Legislative Assembly or as a local Councilor, nor may he be a regular city official. The Mayor shall be ex-officio member of every Standing Committee, Ward Committee. The Mayor conducts the proceedings of the Council

3. The Role of the Chennai City Municipal Corporation Council.

The city of Chennai consists of 155 Divisions and each division is represented by one Member besides the Mayor as a whole. Thus Chennai City Municipal Corporation Council consists of 155 members who are directly elected to serve five-year terms. The Municipal Government of the city shall vest with the Council. For efficient performance and functions of the Corporation, as per the provisions of the act, 10 Ward Committees, 6 Standing Committees besides 1 Appointment Committee are constituted. The Council shall meet atleast once in every month to consider all statements of receipts and disbursements and all progress reports and pass such resolutions thereon as it thinks fit.

4. Administrative Organization Chart



C. Finance

Note: FY2005 starts on 1 April 2005 and ends on 31 March 2006.

Revenue Account - Receipts US\$

Receipt items	Total
---------------	-------

A. TAX REVENUE

1. TAX BY CORPORATION

Property Tax	59770
Profession Tax	10345
Other Taxes	322
Sub-Total (1)	70437

2. ASSIGNED REVENUE

Duty on Transfer of Property	18391
Entertainment Tax	3678
Assignment from Tax Revenue	14253
Sub-Total (2)	36322
TOTAL (1+2) - A	106759

B. NON-TAX REVENUES

SERVICE CHARGES & FEES

Income from License Fees	1034
Income from Building License Fees	3908
Advertisement on Lamp Posts	0
Income from Market fees	5
Contract Income	60
Parking Fees	345
Others	1159
Sale and Hire Charges	255
Miscellaneous Income	9310
TOTAL - B	16076
Revenue Grant - C	4425
GRAND TOTAL (A+B+C)	127260

Note: Budget are converted into thousands of US\$ in US\$1 per INR43.5

Capital Account - Receipts US\$

Receipt items	Total
A. STATE GOVERNMENT	
Government Grant	0
Small Savings Incentive	1149
National Slum Improvement Programme	92
Sub-Total (A)	1241
B. INSTITUTIONAL FINANCE	
Mega City Projects (Loans)	6897
Loan from other Banks	20690
Sub-Total (B)	27587
C. CORPORATION	
Transfer from Revenue Funds	13793
Transfer from Elementary Education Fund	5299
Mayor Special Development Fund	115
Improvement charges fro Private Streets	230
Sub-Total (C)	19437
GRAND TOTAL (A+B+C)	48265

Note: Budget are converted into thousands of US\$ in US\$1 per INR43.5

Revenue Account - Expenditure US\$

Expenditure items	Total
Personnel Cost	37768
Terminal and Retirement benefits	16823
Operating Expenses	13982
Repairs and Maintenance	13752
Programme Expenses	1708
Administration Expenses	6844
Interest on Loans	4285
Payment to Elementary Education Fund	13237
Library Cess - Payment to LLA	2759
Contribution to Capital Fund	13793
Contribution to mayor Special Development Fund	115
Total	125066

Note: Budget are converted into thousands of US\$ in US\$1 per INR43.5

Capital Account - Expenditure US\$

Expenditure items	Total
Interior Roads	18644
Bus Route Roads	4621
Traffic Improvements	1172
Storm Water Drains	2322
Bridges	5195
Street Lights	1908
Solid Waste Management	2322
Mechanical Engineering	483
Buildings	5770
Parks and Playfields	1632
Basic Amenities for Schools	724
Health	138
Family Welfare	138
Other departments	460
Member of Council - Ward Improvement works	2494
Mayor Special Development Fund - Works	115
Total	48138

Note: Budget are converted into thousands of US\$ in US\$1 per INR43.5

E. Public Health

1. Organization / Services of Public Health Sector

Joint Commissioner (Health)



Revised National Tuberculosis Programme (RNTCP)
Chennai Corporation AIDS Prevention And Control Society (CAPACS)
Chennai District Blindness Control Society (CDBCS)

2. Personnel of Public Health Sector

Office	Administrative Staff	Technical Staff	Total
Health Promotion and Planning Division			
Community Health Division			
Preventive Health and Hygiene Control Division			
Eastern Hygiene Inspection Office			
Western Hygiene Inspection Office			
Kita Hygiene Inspection Office			
Tarumi Hygiene Inspection Office			
Nishi Hygiene Inspection Office			
General Sanitation Division			
Mental Care Health Center			
Kobe Institute of Health			
Food Safety Inspection Station			
Total			

Note: The personnel of Health Care Center is allotted with the personnel of Public Health Department.

3. Budget of Public Health Services

Health Services Budget, US \$1000

Services or activities	Amount		
	2005-06	2004-05	2003-04
Personnel Cost	873	850	778
Operating Expenses	1247	1157	1032
Repairs and Maintenance	20	18	17
Programme Expenses	41	37	1
Administrative Expenses	59	61	51
Depreciation	253	207	207
Total	2493	2330	2086

Note: Budget are converted into thousands of US\$ in US\$1 per INR43.5

Family Welfare Services Budget, US \$1000

Services or activities	Amount		
	2005-06	2004-05	2003-04
Personnel Cost	3685	3501	3311
Operating Expenses	52	24	46
Repairs and Maintenance	30	26	24
Programme Expenses	127	92	69
Administrative Expenses	100	94	75
Depreciation	62	69	57
Total	4056	3806	3582

Note: Budget are converted into thousands of US\$ in US\$1 per INR43.5

4. Regulation, Master Plan, Ordinance, and Action Plan for Public Health Promotion

The Government of India evolved National Population Policy 2000. The immediate objective of the policy is to address the unmet needs for contraception, health care infrastructure and health personnel and to provide integrated service delivery for basic reproductive and child health care. The medium term objective is to bring the TFR to replacement levels by 2010 through vigorous implementation of inter-sectoral operational strategies. The long-term objective is to achieve a stable population by 2045, at a level consistent with requirements of sustainable economic growth, social development and environmental protection.

As the part of the above policy with regard to Reproductive and Child Health Programme the Government of India have devised the following Components:

- Prevention and Management of unwanted pregnancy
- Maternal Care that includes antenatal, delivery and postpartum services
- Child survival services for newborn and infants
- Management of STI / RTI

As far as the City of Chennai is concerned, in 1989 India Population Project - V was implemented in Chennai with the following objectives:

- | | | |
|----------------------------------|---|-----------------------------------------------------------|
| 1. Immunisation Coverage | : | Universal |
| 2. Ante-natal care | : | Universal |
| 3. Post-natal Care | : | Universal |
| 4. Institutional Delivery | : | 98% |
| 5. Birth Order | : | Reduction in proportion of 3rd and Higher order of births |
| 6. Couple Protection Rate | : | 60% |
| 7. Growth Monitoring of New Born | : | 80% |

The city has achieved the above indicators in 1995 and continues to sustain the levels by making the improvement wherever possible. Further Corporation of Chennai has committed itself to provide services in conformity with above policy and levels indicated. The city is also implementing other programmes viz. in improving the physical and mental health of the

adolescent girls, birth companion, Health Education Awareness through Link Leaders (HEAL) to suit the local needs.

5. Health Indicators

(As of 2004)

(1) Population

Population	Total	Male	Female
Total number	4859198	2465238	2393960
Number of Births	84156	43194	40962
Number of Deaths	15621	8431	7190
In- migration			
Out-migration			
Population by Age			
0-4	401383	203403	197980
5-9	362302	182688	179614
10-14	353516	179294	174222
15-19	377084	192048	185036
20-24	523485	260970	262515
25-29	548879	277577	271302
30-34	443534	229233	214301
35-39	326045	171453	154592
40-44	233199	124923	108276
45-49	193838	103720	90118
50-54	256784	126761	130023
55-59	236744	116284	120460
60-64	207091	102034	105057
65-75	169785	83933	85852
75-	225529	110917	114612
Life expectancy at birth (years)		77.15	77.56

(2) Reproduction - 2003

Total fertility rate	1.72
Gross reproduction rates	0.83
Net reproduction rate	
Contraceptive prevalence	66.7
Unmet need for contraceptives	
Adolescent pregnancies	23.22
Available staff for safe obstetrics and disease prevention	

Note: Rates per 1,000 populations for specified group. Total fertility rates (TFR) are the sums of birth rates by 5-year age groups multiplied by 5. Gross reproduction (GRR) rates are the sums of births rates by 5-year age groups multiplied by the population of births that were female. Net reproduction rates (NPR) are the sums of

AUICK First 2005 Workshop

birth rates by 5-year age group multiplied by the probability of women surviving to a specified age group (as determined from the life table for the year) and by the proportion of births that were female.

(3) Child Health - 2003

Under five mortality rate (per thousands live births)	11.8
Infant mortality rate (per thousands live births)	15.7
Proportion of one-year old children immunized against measles	98.6

(4) Maternal Health - 2003

Maternal motility rate	0.4
Proportion of births attended by skilled health personnel	99.8
Contraceptive prevalence rate	66.7

(5) HIV/AIDS

1) Number of HIV cases by year of diagnosis and selected characteristics of persons *

	Year of diagnosis					Cumulative through 2004
	2000	2001	2002	2003	2004	
Age at diagnosis (yrs)						
0-14			39	14	61	
15-24			10	1	5	
25-29			59	44	94	
30-39			186	119	240	
40-49			328	229	453	
50-59			118	99	182	
60 and over			32	20	61	
Transmission category						
Male						
Heterosexual contact			475	326	600	
Homosexual contact			0	7	26	
Injection drug use			17	42	60	
Perinatal			24	9	32	
Other or not identified			1	0	14	
Subtotal			517	384	732	
Female						
Heterosexual contact			222	117	313	
Homosexual contact			0	0	0	
Injection drug use			1	0	1	
Perinatal			17	5	22	
Other or not identified			2	12	91	
Subtotal			242	134	417	
Total			759	518	1159	

* VCTC Data

AUICK First 2005 Workshop

2) Number of AIDS cases by year of diagnosis and selected characteristics of persons

	Year of diagnosis					Cumulative through 2004
	2000	Upto 2001	2002	2003	2004	
Age at diagnosis (yrs)						
0-14						
15-24						
25-34						
35-44						
45-54						
55-64						
65 and over						
Transmission category						
Male						
Heterosexual contact						
Homosexual contact						
Injection drug use						
Perinatal						
Other or not identified						
Subtotal						
Female						
Heterosexual contact						
Homosexual contact						
Injection drug use						
Perinatal						
Other or not identified						
Subtotal						
Total		4128	2884	2136	1170	10318

3) Others

HIV prevalence among 15-24 year old pregnant women	0.5%
Condom prevalence rate	
Number of children orphaned by HIV/AIDS	6 orphan 57 Semi-orphan

(6) Health Expenditure

Health budget per capita US\$ in 2004	
Maternal and child health budget per capita US\$ in 2004	

AUICK First 2005 Workshop

(7) Human Resources

Number of medical doctors per capita US\$ in 2004	
Number of registered nurses per capita US\$ in 2004	
Maternal and child health personnel per city population	

(8) Health Centers (As of 2004)

	Total number in your city area	Number managed by your city government
Number of health centers		93 + 72
Professional staff members of health centers		
Doctors		204
Dentists		1
Pharmacists		48
Veterinaries		3
Nutritionists		
Public health Nurses		22
Nurses		51
Midwives		565
Others		73
Total		

(9) Hospitals (As of 2004)

	Total number in your city region	Number managed by your city government
Number of hospitals	25	1
Number of beds	4960	350 + 470 (Family Welfare)
Number of Medical care personnel		
Physicians	720	5
Dentists	52	
Pharmacists	31	3
Public health Nurses		
Nurses	3690	12
Midwives	300	8
Others	950	9
Total		