

City Report of Weihai

Fan Kaimin

Assistant to the Director of Health Bureau
Weihai Municipal Health Bureau, China

A. City Outline

Weihai Located at the eastern tip of Shandong Peninsula, a well-known port and tourist city in China, is one of the coastal open cities and the first national Sanitation City in China as well as one of the first national Model Cities for Environmental Protection. It has twice won the International Award for the Best Practices to Improve the Living Environment by the UN. In 2004, Weihai also won the UN Habitat Scroll of Honor Award. It was regarded as the most suitable city for human settlement.

Weihai covers an area of 5,436 square kilometers with a population of 2.48 million by the end of 2004, increased 7,620 people compared to the last year, including non-agricultural population 1.13 million and agricultural population 1.35 million. The city has an area of 731 square kilometers with urban population of 569,438. The population growth in 2004 was curbed effectively with the birth rate 6.23‰, death rate 7.27‰, and population natural rate of growth -1.04‰. Weihai has the jurisdiction over three county-level cities of Rongcheng, Wendeng, Rushan and one district of Huancui.

Weihai enjoys a long history. More than 2000 years ago, China's first Emperor of the Qin Dynasty visited Weihai twice. In 1398, the government of the Ming Dynasty established Weihai Fort. Historical winds and rains gone with the time. Today Weihai was changed into modern city with harmonious integration between human and nature.

B. Government Structure

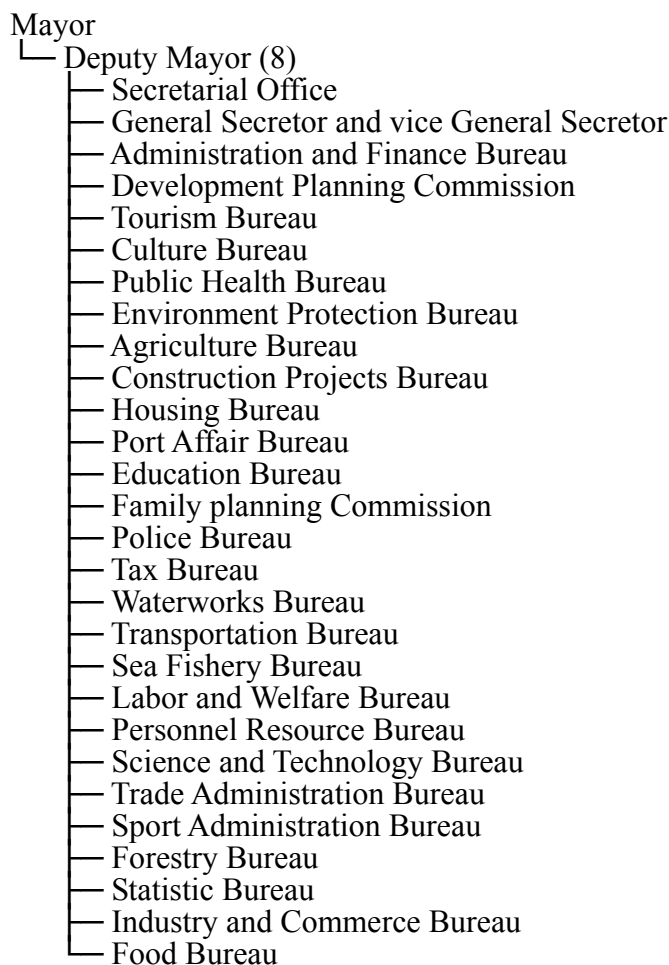
1. Local Government System

In China, there is five-degree government, include center government, province government, city government, county government and town government. Lower lever governments are authorized by higher-up government. The highest authority is the National People's Congress, and each government belong to the same grade local Pelople's Congress. But only the National People's Congress and the Province People's Congress have the legislation jurisdiction. The local Pelople's Congress could decide their principles, such as social welfare, public health, and urban planning. The government is the executive institution of the Pelople's Congress. Weihai, like other local authorities, consists of many executive branches.

2. The Role of the Mayor

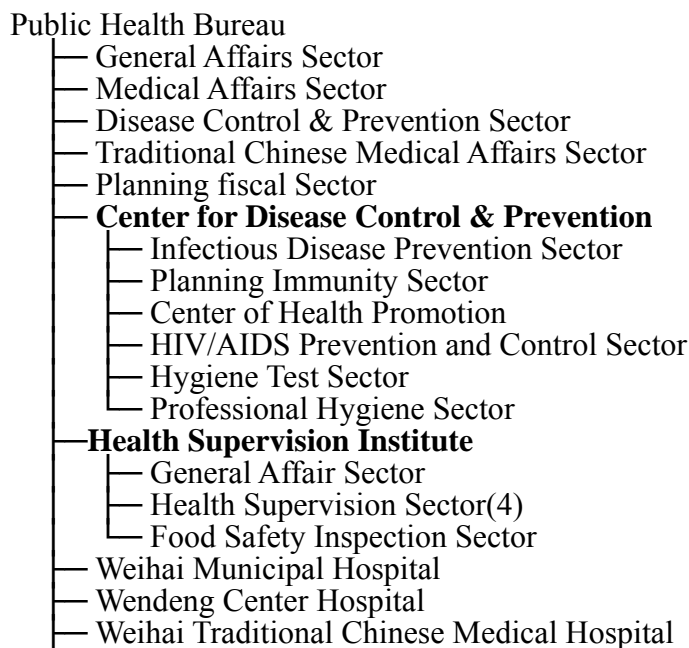
Members of the local People's Congress elect the mayor, and serve five-year terms. The mayor is responsible for overall local authority's services affairs, and is authorized to represent the authority externally, and is authorized to proposal deputy-mayor.

3. Administrative Organization Chart



C. Public health

1. Organization of Public Health Sector



- Weihai Women & children Hospital
- Weihai Mental Health Care Center
- Weihai Nursing School
- Weihai Health Professional Promote School

2. Personnel of Public Health Sector

Office	Administrative Staff	Technical Staff	Total
General Affairs Sector	16		16
Medical Affairs Sector	3		3
Disease Control & Prevention Sector	3		3
Traditional Chinese Medical Affairs Sector	2		2
Planning fiscal Sector	4		4
Center for Disease Control & Prevention	6	59	65
Health Supervision Institute	4	66	70

3. Budget of Public Health Services

Budget of Public Health Services for 2005 (unit: thousands of US\$, converted in US\$ 1 per RMB 8.23)

Expenditure items	Amount	Resources			
		General Finance	Funds from national and prefecture governments	City bonds	Others
Disease Control and preventive	1,292.96		1,292.96		
Hygiene Supervise	613.61		613.61		
Medical Services	54,030.25		4,722.96		4,9307.29
Total	55,936.82		6,629.53		4,9307.29

Note: FY 2005 starts on 1 January 2005 and ends on 31 December 2005

4. Regulation, Master Plan, Ordinance, and Action Plan for Public Health Promotion

In China, to promote public health the state had made a series regulations, master plans, ordinances, and action plans. Such as Law of the People's Republic of China on the Prevention and Control of Infectious Diseases, Measure for the Implementation of Law on the Prevention and Control of Infectious Diseases, Some Principles of HIV/AIDS Monitor Administration, Law of the People's Republic of China on Maternal and Infant Health Care, Administrative Measure of Permission Special Technology Services and Personnel Qualification, Administration Ordinance of Family Planning Technology, and Law of the People's Republic of China on Food Hygiene. As front mentioned the local government is under the center government, local government must abide the center government policies.

5. Health Indicators

(1) Population

Population	Total	Male	Female
Total number	569,438	287,566	281,872
Number of Births	3,542	1,789	1,753
Number of Deaths	4,103	2,230	1,873
In- migration	9,088	4,589	4,499
Out-migration	4,685	2,366	2,319
Population by Age			
0-4	18,438	9,509	8,929
5-9	23,459	11,925	11,534
10-14	36,737	18,636	18,101
15-19	37,985	20,142	17,843
20-24	32,500	16,865	15,635
25-29	40,138	20,178	19,960
30-34	47,865	24,045	23,820
35-39	61,788	30,927	30,862
40-44	56,586	28,731	27,855
45-49	57,034	29,085	27,949
50-54	39,418	20,538	18,880
55-59	28,448	15,375	13,073
60-64	25,948	13,613	12,335
65-75	40,526	18,707	21,819
75-	22,567	9,289	13,278
Life expectancy at birth (years)	75.4	73.1	77.6

(2) Reproduction

Total fertility rate	1
Gross reproduction rates	0.4878
Net reproduction rate	0.4634
Contraceptive prevalence	0.9578
Unmet need for contraceptives	0.0422
Adolescent pregnancies	0.0012
Available staff for safe obstetrics and disease prevention	120

Note: Rates per 1,000 populations for specified group. Total fertility rates (TFR) are the sums of birth rates by 5-year age groups multiplied by 5. Gross reproduction (GRR) rates are the sums of births rates by 5-year age groups multiplied by the population of births that were female. Net reproduction rates (NPR) are the sums of birth rates by 5-year age group multiplied by the probability of women surviving to a specified age group (as determined from the life table for the year) and by the proportion of births that were female.

(3) Child Health

Under five mortality rate (per thousands live births)	8.97‰
Infant mortality rate (per thousands live births)	7.1‰
Proportion of one-year old children immunized against measles	100%

Note: Under five mortality rate is the probability of dying between birth and exactly five years of age, expressed per 1000 live births. Infant mortality rate is the deaths per 1000 live births of children during their first year of life.

(4) Maternal Health

Maternal mortality rate	25/100,000
Proportion of births attended by skilled health personnel	98%
Contraceptive prevalence rate	95.78%

(5) HIV/AIDS

1) Number of HIV cases by year of diagnosis and selected characteristics of persons

	Year of diagnosis					Cumulative through 2004
	2000	2001	2002	2003	2004	
Age at diagnosis (yrs)						
0-14						
15-24						
25-34	1		1	1	1	4
35-44	1		1	2	1	5
45-54						
55-64						
65 and over						
Transmission category						
Male						
Heterosexual contact	1		1			2
Homosexual contact						
Injection drug use						
Perinatal						

	Other or not identified	1	1	2	1	5
	Subtotal	2	2	2	1	7
Female						
	Heterosexual contact					
	Homosexual contact					
	Injection drug use					
	Perinatal					
	Other or not identified			1	1	2
	Subtotal			1	1	2
Total		2	2	3	2	9

2) Number of AIDS cases by year of diagnosis and selected characteristics of persons

	Year of diagnosis					Cumulative through 2004
	2000	2001	2002	2003	2004	
Age at diagnosis (yrs)						
0-14						
15-24						
25-34						
35-44						
45-54						
55-64						
65 and over						
Transmission category						
Male						
Heterosexual contact						
Homosexual contact						
Injection drug use						
Perinatal						
Other or not identified						
Subtotal						
Female						
Heterosexual contact						
Homosexual contact						
Injection drug use						
Perinatal						
Other or not identified						
Subtotal						
Total	0	0	0	0	0	0

3) Others

HIV prevalence among 15-24 year old pregnant women	0
Condom prevalence rate	unavailable
Number of children orphaned by HIV/AIDS	0

(6) Health Expenditure

Health budget per capita US\$ in 2004	10
Maternal and child health budget per capita US\$ in 2004	5

Note: This expenditure is finance budget expenditure

(7) Human Resources

Number of medical doctors per capita in 2004	0.0020
Number of registered nurses per capita in 2004	0.0015
Maternal and child health personnel per city population	0.0030

(8) Hospitals (As of 2004)

	Total number in your city region	Number managed by your city government
Number of hospitals	9	8
Number of beds	2970	2707
Doctors	1275	1151
Pharmacists	230	207
Nurses	920	840
Midwives	36	33
Others	791	721
Total	3252	2952

6. Programs and Services for Reproductive Health

To implement the national state public health policies, Weihai city had made some programs, include The Program for 2001 to 2010 Women and Infants Development, it include advocacy national law, regulations, ordinance, and impel the maternal and enfant health care and family planning technology. Highlighted the antenatal consultation and antenatal examination, highlighted the advocacy of the antemarital examination, and disseminated information of using condom in sex life. In the passed several years we had implemented the measures that let the mother and her baby in a same room instead of separating them, and let the husband accompany the wife in the delivery course, and impelled infant planning immunization at large. The China has large number of population that we must control it. The policy of family planning is not only benefit to China but also to the world. Fortunately, in the passed five years Weihai's birth rate has continued declined. Next we will highlight adolescent health education and Endeavor promoting the public health diathesis. Decreasing abortion rate. Reduce the infectious disease, especial of the HIV/AIDS. By the end of 2010, we will reduce the infant mortality under 6‰, infant defect rate under 4‰, the pregnant and natal woman mortality under 15/100,000, the Contraceptive prevalence rate reach to 98 percent.

(Budget is converted into thousands of US\$)

Types of Service	Description	Budget for 2004
IEC	A. Implementing sector: Weihai Municipality Health Bureau Disease control and prevent sector. B. Target population include mothers, children, adolescents and youth, females, and males	A. Total 121.5 B. Percentage of the city total Not clear

	<p>C. Service components: internet web, a course of lectures, communicate</p> <p>D. Duration of program from 2005 to 2010</p> <p>E. Goals and Achievements Popularize sexual knowledge, pregnant knowledge, sex disease and HIV/AIDS prevention knowledge.</p> <p>F. Problems and constraints Budgetary is low, and lack of personnel and financial resources</p>	<p>C. Resources Treasury</p>
ANC	<p>A. Implementing sector: Each hospital gynecology unit</p> <p>B. Target population include: Pregnant women</p> <p>C. Service components: Type B- ultrasonic, gynecologic examination</p> <p>D. Duration of program: From 2005 to 2010</p> <p>E. Goals and Achievements: Every pregnant women take ten times examination, reduce the infant defect disease</p> <p>F. Problems and constraints: No problem</p>	<p>A. Total 60</p> <p>B. Percentage of the city total Not clear</p> <p>C. Resources at one's own expenses</p>
NC	<p>A. Implementing sector: Each hospital gynecology unit</p> <p>B. Target population include: Pregnant women</p> <p>C. Service components: Gynecologist, para-medical</p> <p>D. Duration of program: From 2005 to 2010</p> <p>E. Goals and Achievements: Decline maternal mortality under 15/100,000, infant morality under 3‰</p> <p>F. Problems and constraints: No problem</p>	<p>A. Total 850.5</p> <p>B. Percentage of the city total Not clear</p> <p>C. Resources at one's own expenses</p>
PNC	<p>A. Implementing sector: Each hospital gynecology unit</p> <p>B. Target population include: Post natal women and her infant</p> <p>C. Service components: Gynecologist, para-medica</p> <p>D. Duration of program: From 2005 to 2010</p> <p>E. Goals and Achievements: Perinatal women have good health care</p> <p>F. Problems and constraints: No problem</p>	<p>A. Total 40</p> <p>B. Percentage of the city total Not clear</p> <p>C. Resources at one's own expenses</p>
Immunization	<p>A. Implementing sector: Community service centers, Center Disease Control and Prevent</p> <p>B. Target population include: Children</p> <p>C. Service components:</p>	<p>A. Total 1215.1</p> <p>B. Percentage of the city total Not clear</p>

	<p>Doctors, nurses D. Duration of program: From 2005 to 2010 E. Goals and Achievements: Immunization rate reach to upper 98% F. Problems and constraints: Lack of bacterin and finance</p>	<p>C. Resources Treasury</p>
<p>HIV/AIDS prevention</p>	<p>A. Implementing sector: Community service centers, Center Disease Control and Prevent B. Target population include: All pepole C. Service components: Dessiminate information of sex, Popularize using condom D. Duration of program: From 2005 to 2010 E. Goals and Achievements: Treatment current HIV/AIDS patient, prevent HIV/AIDS transmit F. Problems and constraints: Lack of sexual knowledge, sex disease and HIV/AIDS prevention knowledge, and finance</p>	<p>A. Total 60.75 B. Percentage of the city total Not clear C. Resources Treasury</p>